

MULTI-TENANT OFFICE BUILDING

241 COMMERCE DRIVE (NEC ROUTE 176 & COMMERCE), CRYSTAL LAKE, IL

FOR LEASE



10,199 SF MULTI-TENANT OFFICE BUILDING

Tim Billimack & Nicole Kirchberg
815-355-0196 | 815-307-2222
billimackt@gmail.com
nckirchberg@gmail.com



Blue Chip Commercial Real Estate, 101 N. Main Street Crystal Lake, IL 60014
www.bluechipcommercialre.com

MULTI-TENANT OFFICE BUILDING

241 COMMERCE DRIVE (NEC ROUTE 176 & COMMERCE), CRYSTAL LAKE, IL

FOR LEASE



PROPERTY SPECIFICATIONS

OFFERING :	For Lease
BUILDING: SIZE	10,199 SF Multi-Tenant Office Building
LEASE RATE:	\$14 NNN
OPERATING: EXPENSES	\$8.30 SF
UTILITIES:	Included in operating expenses
AVAILABLE:	2,085 SF
AGE:	1990
ACRES:	.71 Acres
FRONTAGE:	205' (Route 176)
ZONING:	O (City of Crystal Lake)
ELEVATOR:	Yes
PARKING:	45 Spaces Private Lot
SIGNAGE:	Monument & Exterior Wall
ACCESS:	Full Access
TRAFFIC:	12,800 VPD Route 176

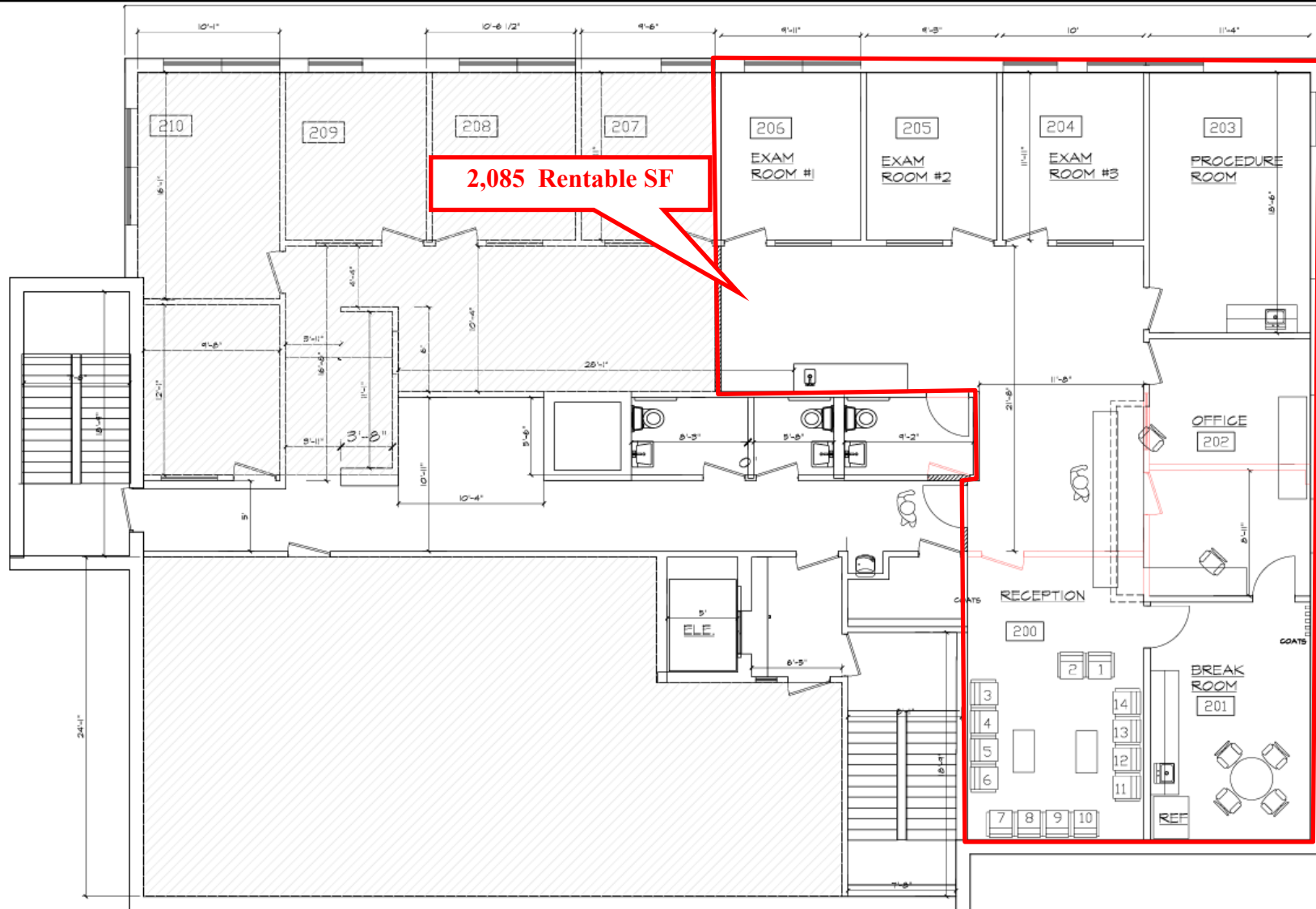
Property Highlights

- **High Profile Office Building Location Situated Along State Highway Route 176**
 - **Second Floor Professional Office Suite Currently Available for Lease**
- **Centrally Located in Crystal Lake / Close Proximity to Train, Restaurants, and Shopping**
- **Affluent Population with Average Household Income Exceeding \$118,101 Within 3 Mile Radius**

MULTI-TENANT OFFICE BUILDING

241 COMMERCE DRIVE (NEC ROUTE 176 & COMMERCE), CRYSTAL LAKE, IL

FLOOR PLAN
2,085 Rentable SF



MULTI-TENANT OFFICE BUILDING

241 COMMERCE DRIVE (NEC ROUTE 176 & COMMERCE), CRYSTAL LAKE, IL

AERIAL CLOSE UP



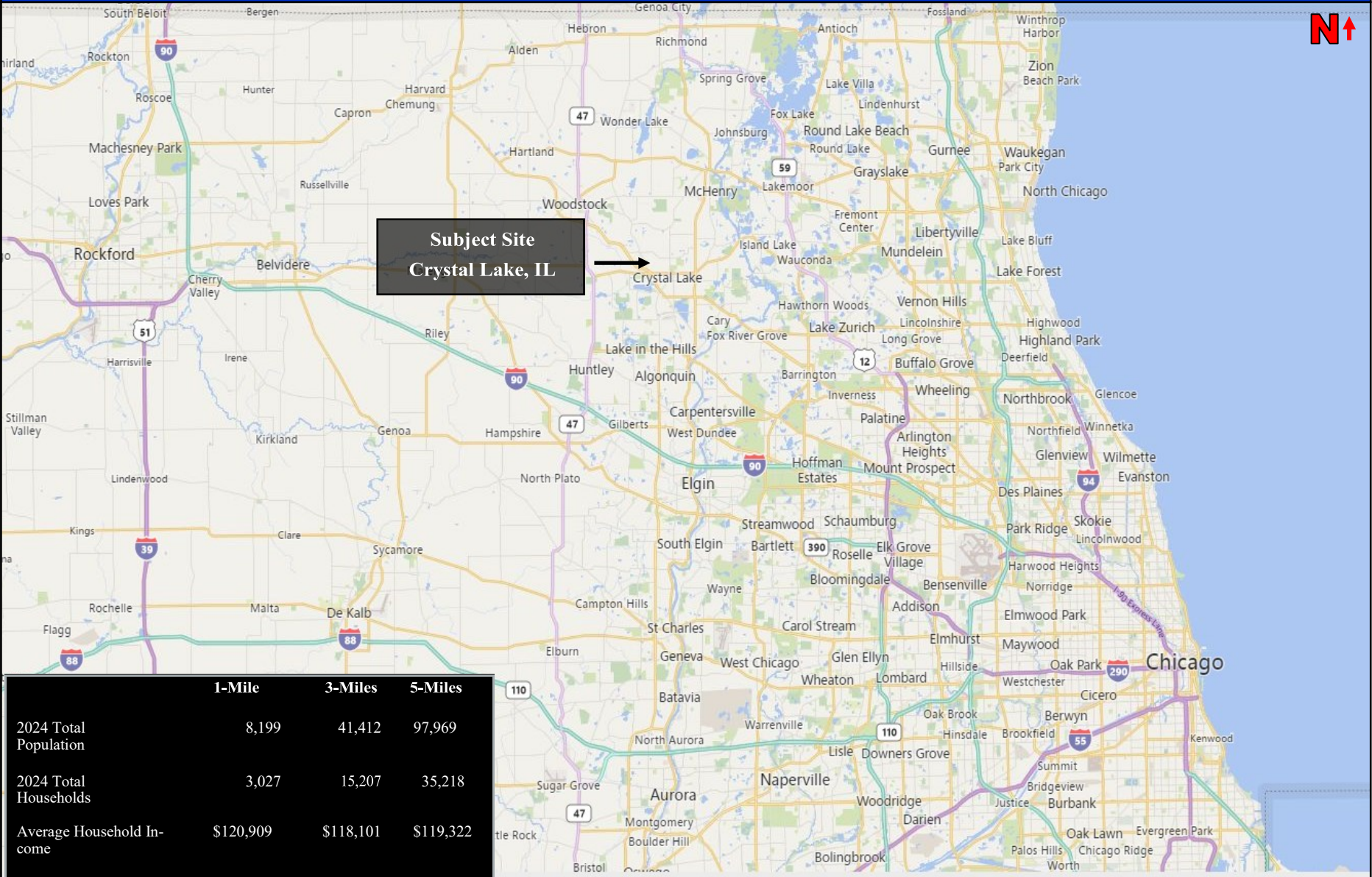
Blue Chip Commercial Real Estate, LLC, 101 N. Main Street, Unit 15, Crystal Lake, IL 60014
www.bluechipcommercialre.com



MULTI-TENANT OFFICE BUILDING

241 COMMERCE DRIVE (NEC ROUTE 176 & COMMERCE), CRYSTAL LAKE, IL

STREET MAP & DEMOGRAPHICS



Disclaimer: Blue Chip Commercial Real Estate, LLC is the owner's designated agent and makes no warranties or representations as to the accuracy or completeness of this information contained herein. The information has been obtained through sources deemed reliable; however, it is up to the purchaser to conduct due diligence prior to sale or lease.